

MANUAL FOR ACCEPTING OR REFUSING POWER STEERING RACKS

General Ricambi will accept only ORIGINAL RACKS dismantled from the car, this means that the parts must be original (we DO NOT ACCEPT : Chinese racks and racks from non-original brands which have been modified).

EXAMPLE of an ORIGINAL RACK which we will ACCEPT :



OK

For checking the steering rack, it is necessary to remove the rubber boot, and control the status of the internal rack



WAY OF PACKING : The steering racks can be packed in a jumble like into this picture, only taking care that they will be not damaged during the transport operation.

It is therefore **NOT** necessary to put them into boxes, but we kindly ask to flush out the steering oil.

EXAMPLES of STEERING RACKS which we will NOT ACCEPT :



We will NOT accept modified racks. In the picture, it is visible that the rack has been modified.

The red circle shows that the rack has been filed / eroded : in this case, the diameter is smaller than the original, and in this case we will not be able to use the original components / rubber seals.

EXAMPLES of STEERING RACKS which we will NOT ACCEPT :



NOT GOOD - Rusty rack



NOT GOOD - Rusty rack



NOT GOOD - Rusty rack



NOT GOOD - Rusty rack



NOT GOOD - Rusty rack



NOT GOOD - Rusty rack

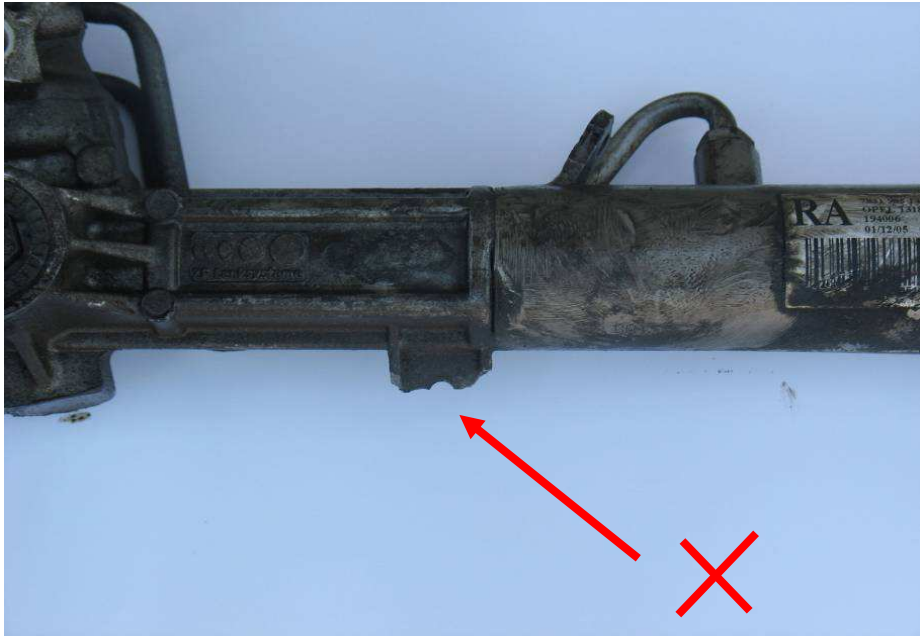


NOT GOOD - Rusty rack

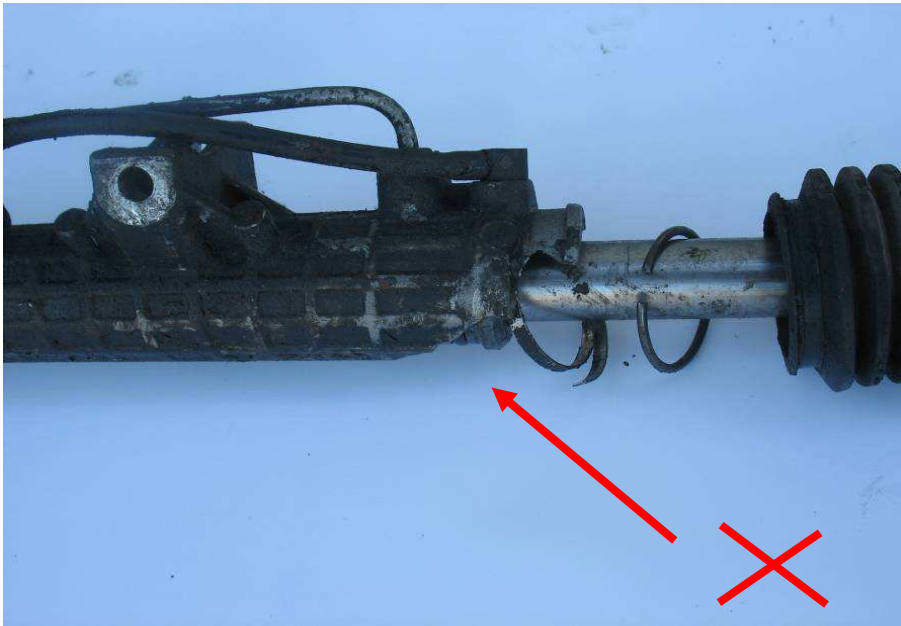


Old cores return policy for Power Steering Racks

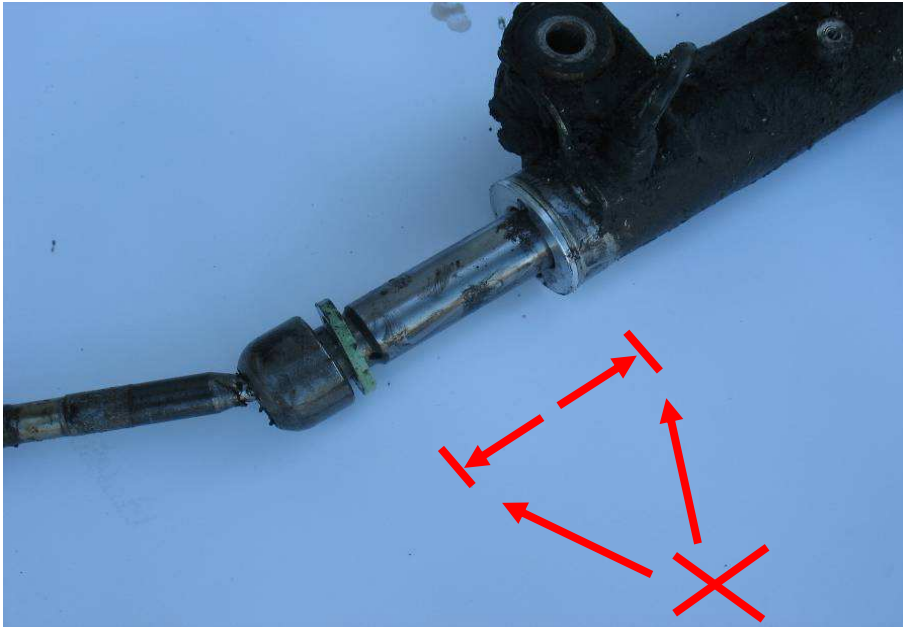
**We are going to accept all the incoming old cores,
that will comply with the following instructions :**



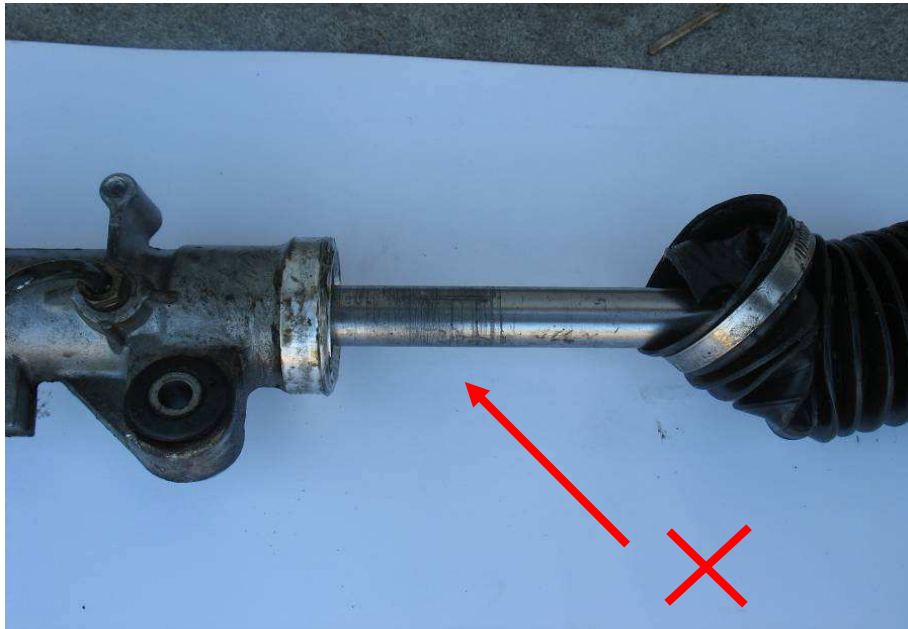
No broken fixing points on the body



No broken body
(must be absolutely complete without damages)



No blocked flow (rack blocked)



- > No modified racks (i.e. filed inside)
- > No rusty / oxidised / corroded racks

NOTE : The REASON of these 2 strict requirements is because we use ORIGINAL SEALS ONLY, for the remanufacturing process. A modified or rusty rack will therefore cause the reduction of the original rack diameter, with consequent oil leakage. For safety reasons, we refuse to employ other seals than the original ones.

Additionally :

- > Returned racks must NOT show any broken part on the central body.
- > Body must not be cracked.
- > Body must be straight without any deformation.
- > Oil connections must be in perfect condition.

Packing rules :

- > We are NOT so strict concerning the packing of old cores to be returned.
- > It's NOT necessary to pack them into the original box.
- > It's NOT necessary to identify each rack with a label (ref. number, model of car etc.)
- > Racks could be packed "in a jumble", just taking care that they won't be damaged during the transport.
- > Kindly flush out the steering oil before transport to not dirty your / our storage places.

