

RETURN CRITERIA FOR THE REGENERATION INSERT

ARNOTT PRODUCTS

In the core regeneration process, Arnott uses cores of OE products only.

Characteristics of non-OE cores:

- Spot welded pins (spot welded pins make the core be qualified as a non-OE core).
- “High quality” marking on the product label (labels can be found at different locations within the shock absorbers).
- The shock absorber components in “high gloss” finish (bellows and shock absorber components with glossy reflective paint finish are non-OE parts).
- ATC label (the following ATC serial number label does not appear on OE products).
- White sealing (white sealant/adhesive is not used in OE products to attach the shield to the upper mount. In OE products, the press-fit joints without additional sealing are used).
- Spot welds (spot welds on the valve housing and the shock absorber connectors represent a non-OE part. The only exception where point welds are used is the Mercedes-Benz S-Class W220 (AS-2193 & AS-2194) columns).
- ALS valves (connectors) (valves marked as ALS are not OE valves, so the cores they are on are considered as non-OE cores. Only shock absorbers with VOSS valves are considered as OE products.)

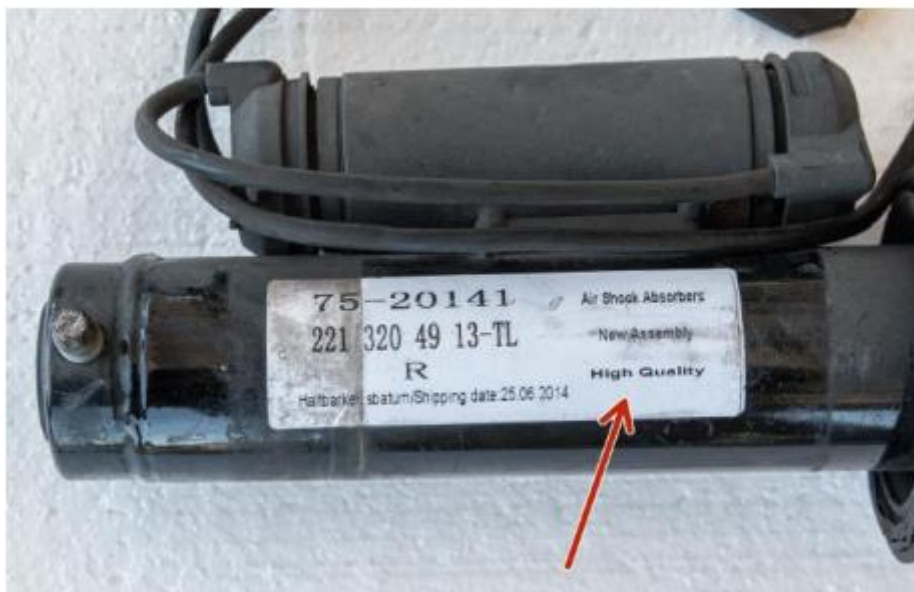
The following section provides examples of the characteristics described above. The list is not exhaustive and does not guarantee that the remaining cores will be accepted.

Spot welded pins

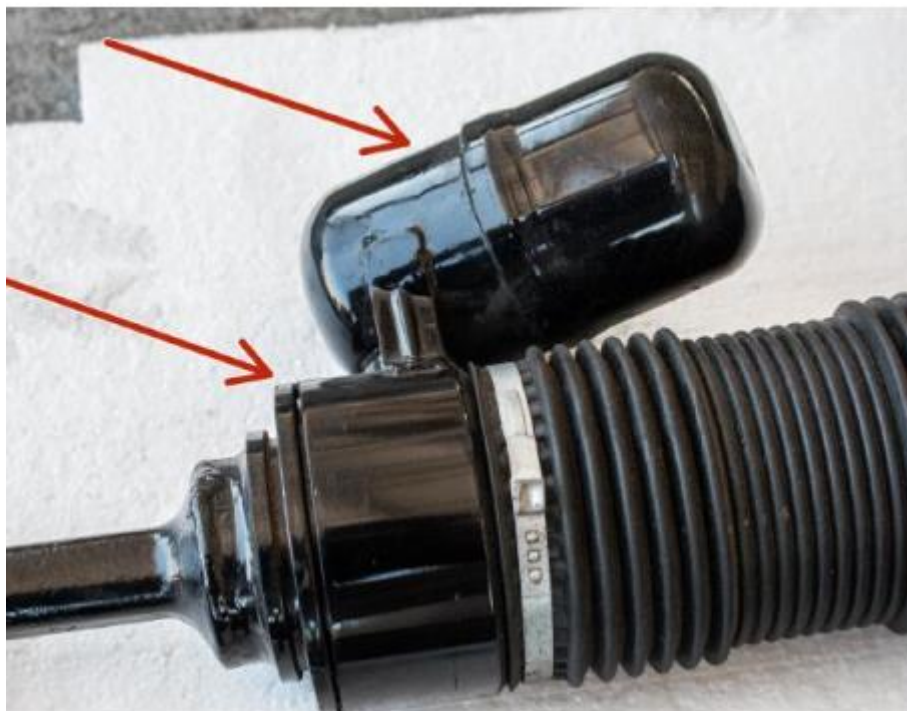
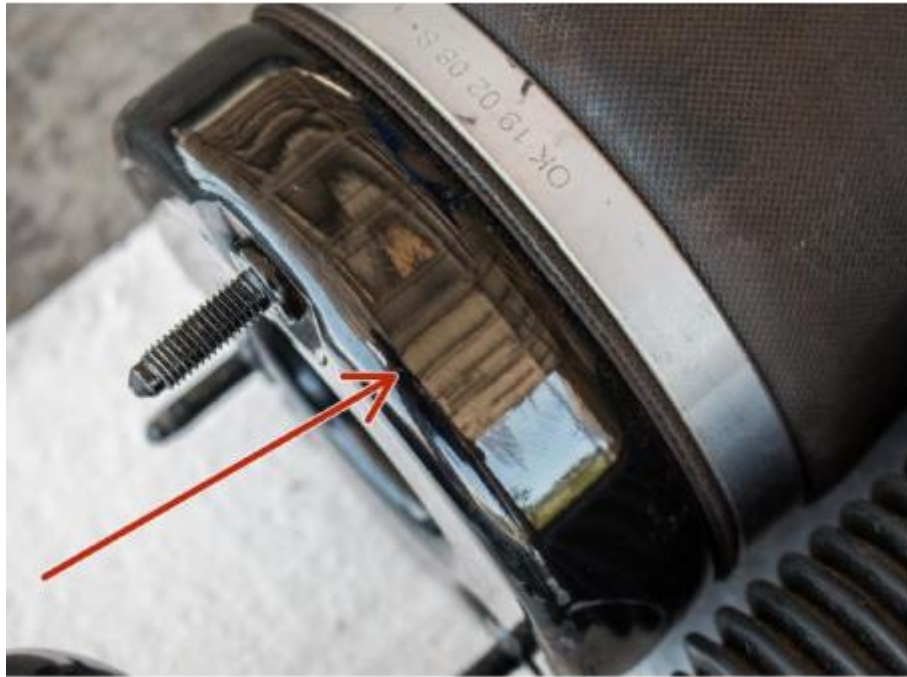
spot welded pins make the core be qualified as a non-OE core).



“High quality” marking on the product label
labels can be found at different locations within the shock absorbers



The shock absorber components in “high gloss” finish
bellows and shock absorber components with glossy reflective paint finish are non-OE parts).



ATC label

the following ATC serial number label does not appear on OE products).



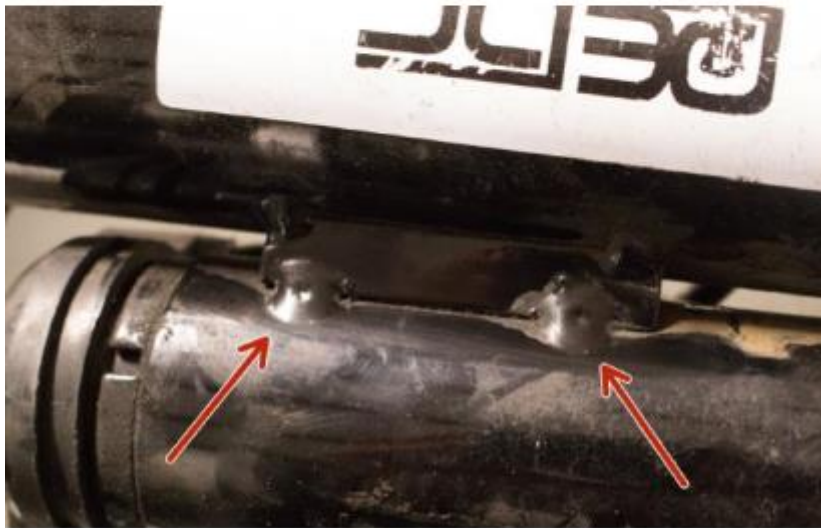
White sealing

white sealant/adhesive is not used in OE products to attach the shield to the upper mount. In OE products, the press-fit joints without additional sealing are used



Spot welds

spot welds on the valve housing and the shock absorber connectors represent a non-OE part. The only exception where point welds are used is the Mercedes-Benz S-Class W220 (AS-2193 & AS-2194) columns).



ALS valves (connectors)

valves marked as ALS are not OE valves, so the cores they are on are considered as non-OE cores. Only shock absorbers with VOSS valves are considered as OE products.

